

56k External Modem Installation Guide

(For Windows Vista)

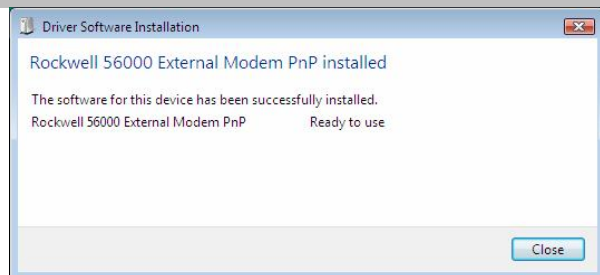
Note :

1. This installation guide is for serial 56k modem only
2. The COM port should be **enabled** in the BIOS setting. Pls. refer to the instruction manual of the motherboard.
3. Since the external modem had been discontinued for many years, there is no driver for Vista. The following installation using generic driver may not work full functional (e.g. Voice speaker phone and fax function). But it can allow you to have internet access.

Windows Vista (32-bit) Driver Installation

A. Auto Detection Method

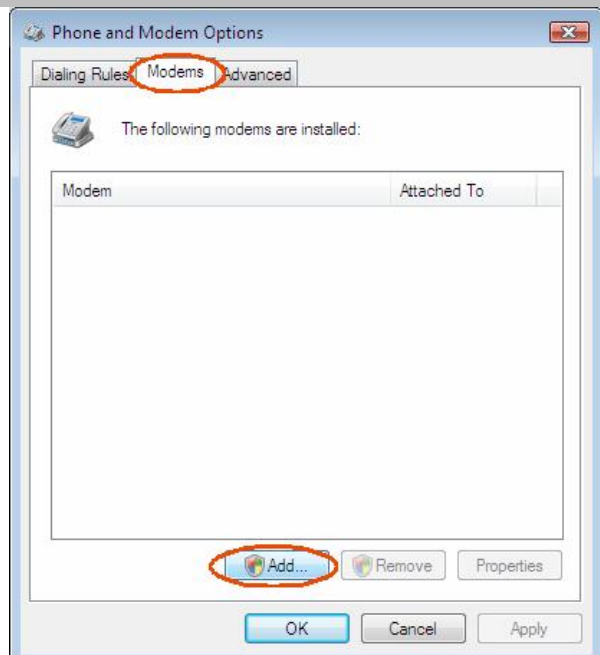
1. Connect the serial cable to a COM port
2. Power-on the 56k external modem
3. Start the Windows Vista
4. Windows Vista will auto install the driver
e.g.
"Rockwell 56000 External modem PnP"
5. To check the functionality of the modem, pls. refer to the appendix



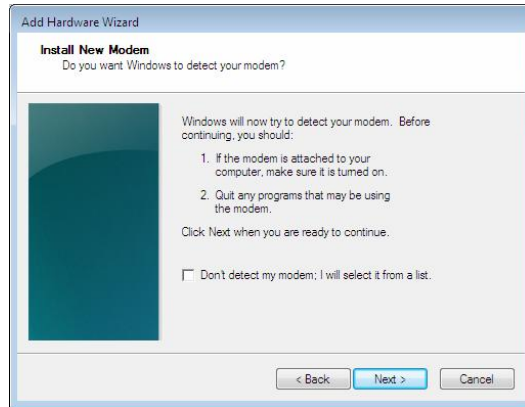
If Windows Vista cannot find the modem driver, pls. refer to **section B**

B – Adding modem driver manually

1. Select "Control Panel-> Classic view -> Phone and modem options"
2. Select "Modems" tag
3. Click "Add" button



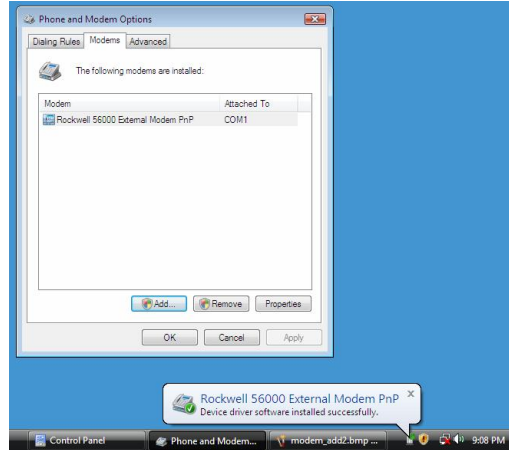
- In the “Add hardware wizard” windows, click “Next” button



- After a while, Windows Vista will detect the modem and install the modem driver in the system

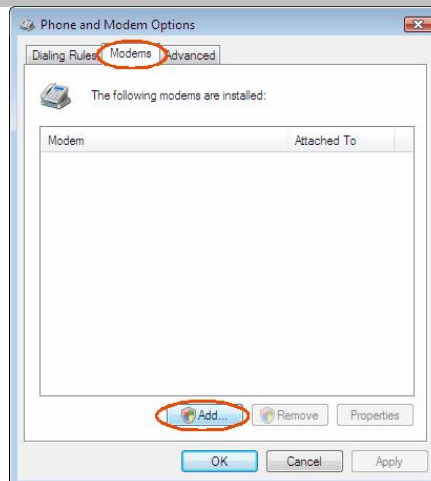
- To check the functionality of the modem, pls. refer to the appendix

If Windows Vista cannot find the modem driver, pls. refer to **section C**

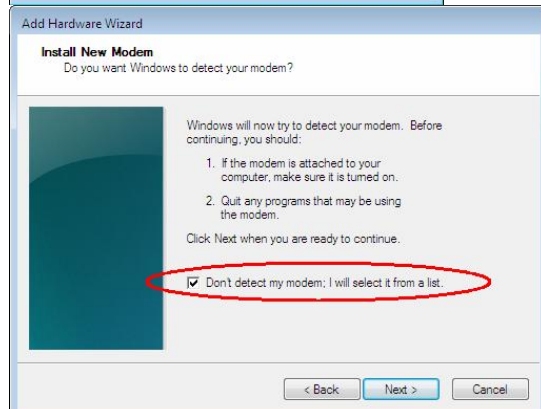


C – Adding 56k generic modem driver manually

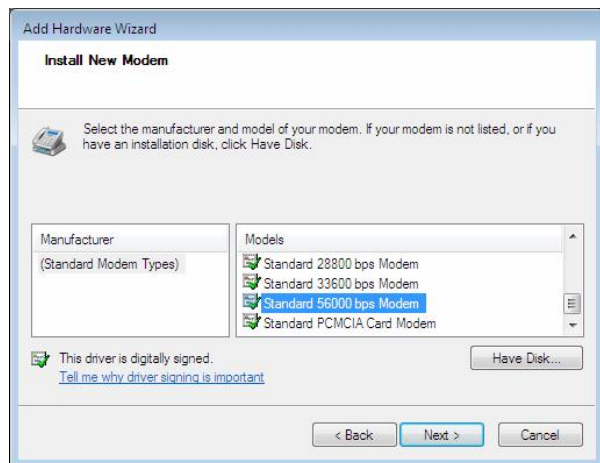
- Select “Control Panel-> Classic view -> Phone and modem options”
- Select “Modems” tag
- Click “Add” button



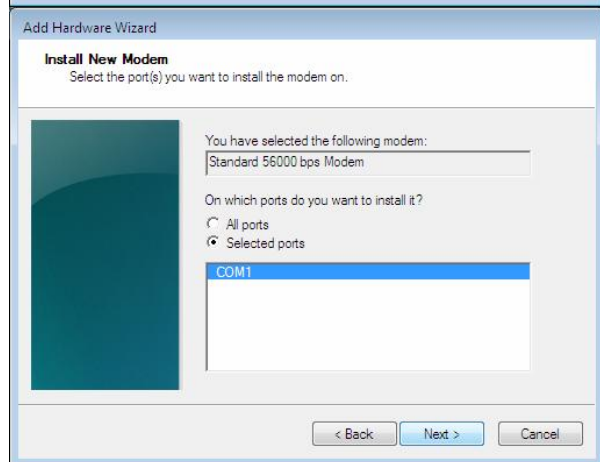
- In the “Add hardware wizard” windows, check the box next to the “Don’t detect my modem. I will select it from a list”
- Then, Click “Next” button



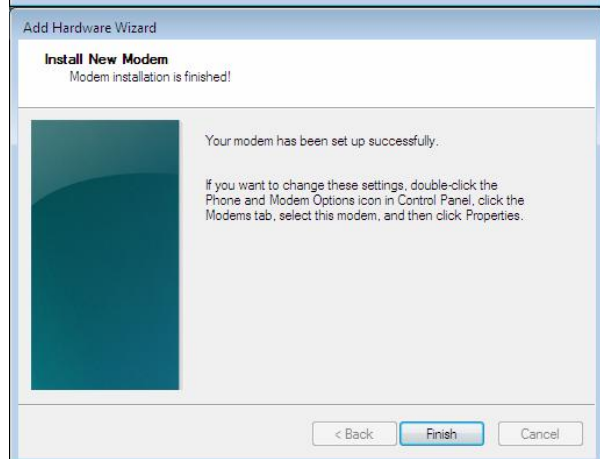
6. Select “Standard 56000 bps modem” and then click “Next” button



7. Select the COM port which connected to the modem and click the “next” button

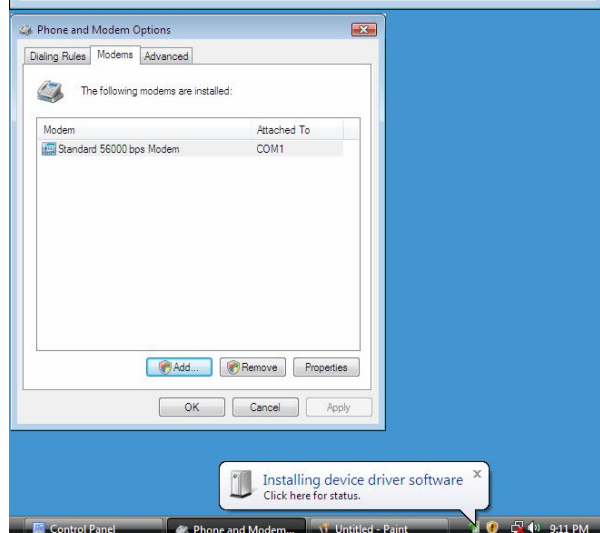


8. After a while, the driver will be installed into the system.



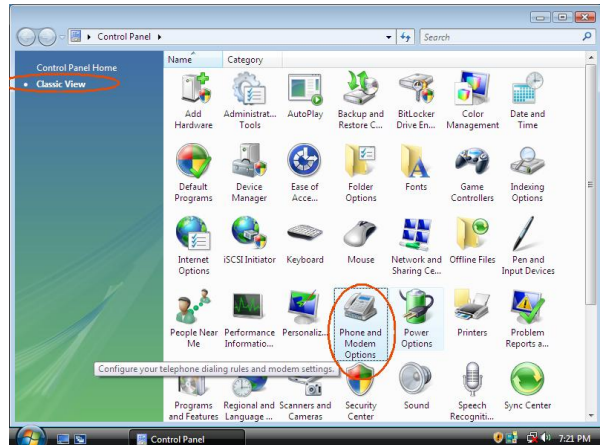
9. Then, the “Standard 56000 bps modem” driver has been installed successfully.

10. To check the functionality of the modem, pls. refer to the appendix

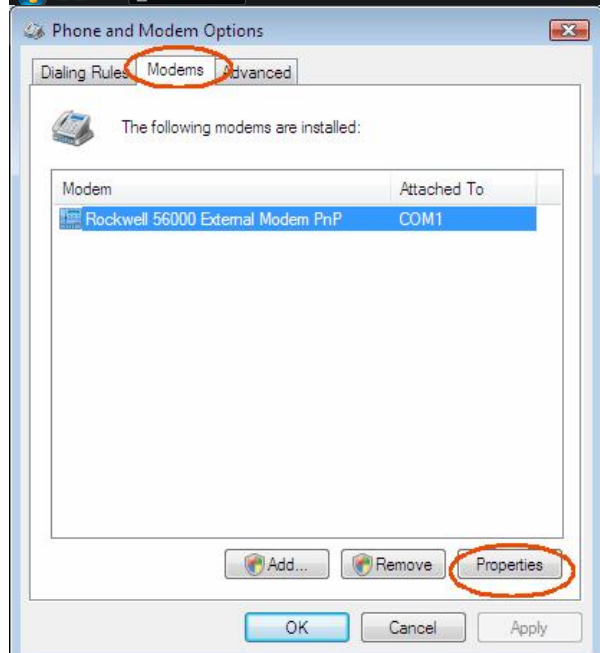


Appendix – Modem Diagnostic

1. Verify the modem driver are installed correctly
Select “Control Panel-> Classic view -> Phone and modem options”



2. Select “Modem” and click “Properties” button



3. Select “Diagnostics” and click “Query Modem”

