

# **Nightingale Pro 6**

**Optical Kit**

## **Installation Manual**

[www.zoltrix.com](http://www.zoltrix.com)

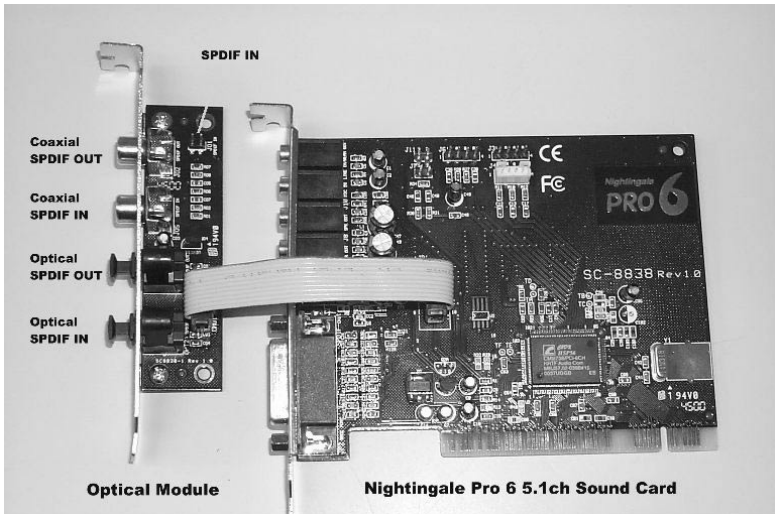


Manual Version 1.0

Information in this manual is subject to change without notice.

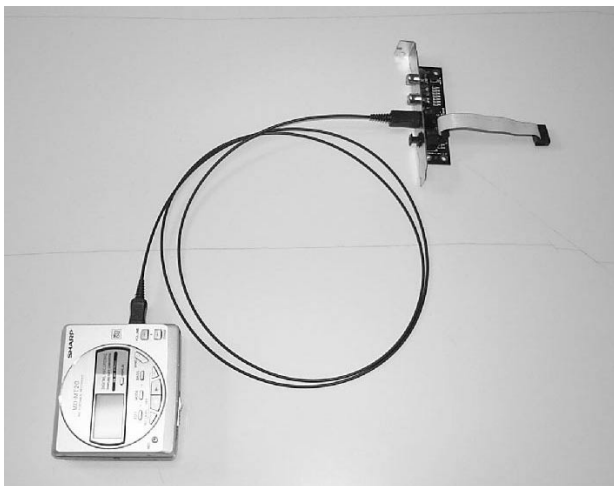
## Hardware Installation

1. Connect the optical module cable into the port of your *Nightingale Pro 6* PCI Audio Accelerator as shown below.
2. Install the optical module into an available slot next to the sound card.
3. Connect J01 to the Digital / SPDIF-Out of the internal CD-ROM. (*Do not use the J11 on the sound card as SPDIF-In, if Optical Module is installed*)

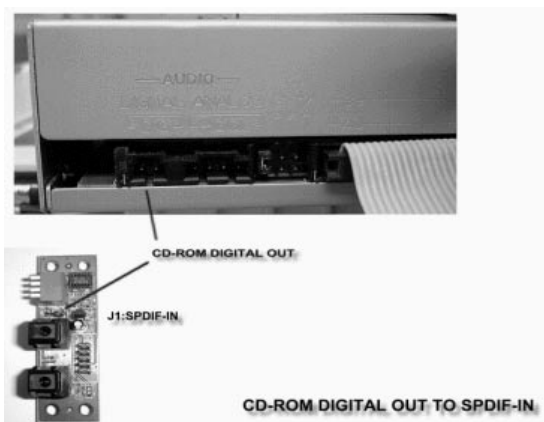


## The output:

A. PC to MD player: this includes CD audio to MD player, WAV to MD player, and wave-table music to MD player.



B. PC's CD-ROM player to MD



Note: The actual optical module may be slightly different from the picture shown above.

C. Portable CD-ROM player to MD



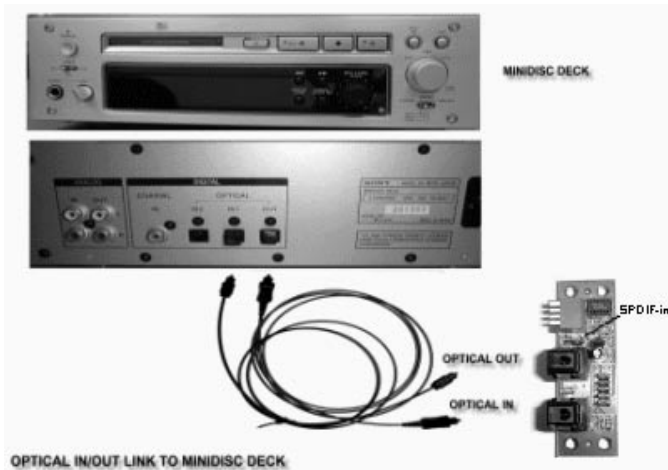
D. PC to AC3 decoder or DAC.



Note: Please connect the Coaxial cable from the Coaxial SPDIF-OUT port on the Optical Module to the Coaxial input on the AC-3 decoder or DAC.

## The Input:

A. MD player to PC: the optical in can accept digital audio from the desktop MD player or high-end CD, and store it in 24-bit WAV format.



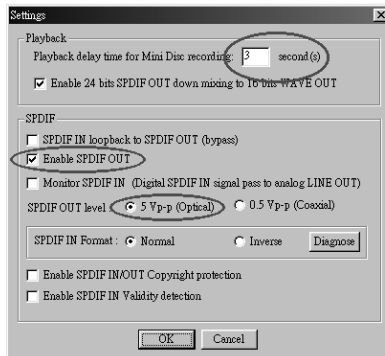
## Using MP3/Wave Player to work with Mini Disc recording

MP3/Wave Player is an easy and powerful tool for Mini Disc recording. Besides allowing you to create your favorite play list, it also provides a control interface of SPDIF IN/OUT of sound card. The following 4 steps can help you create your album into Mini Disc easily.

**STEP 1.** Using optical fiber to connect the sound card and MD player. MD player will start to do the recording and turning on the SYNC mode. (See above Output A. PC to MD player)

**STEP 2.** To execute MP3/Wave Player and modify the play list. You should select those files whose format can be recognized by MD Player. You can also change the sound effect if you like.

**STEP 3.** In 'Setting' dialog, check 'Enable SPDIF-OUT', input the playback delay time, and select 5 Vp-p (Optical). Please note that in playback, if there is no lapse longer than three seconds between each track, the MD can not recognize the tracks and will record all of them into one. It is recommended that you set the lapse time to 3~5 seconds to meet all type of MD requirements.



**STEP 4.** Start to play the songs. You will see that the MD Player starts to do the recording as well.



### **CAUTION**

*Do not look at the signal beam directly. It may cause severe damage to eye. For your safety, always point the output end to a piece of white paper to check if the beam is present.*

## Recording from SPDIF-IN

The optical module can connect to SPDIF-IN device, such as Portable CD-ROM player, CD-ROM driver, MD Player, etc. The Windows application and the MP3/Wave player can be used to do the recording of the signal from SPDIF-IN. The recording steps are as follows:

**STEP 1.** Use optical fiber or coaxial to connect the sound card and SPDIF-IN device.

**STEP 2.** Execute MP3/Wave Player. In 'Setting' dialog, select 5 Vp-p (Optical) or 0.5 Vp-p (Coaxial).

**STEP 3.** In 'Wave Recording' dialog, you should select the recording format and SPDIF-IN recording channel. Then input the file name. Before recording, please turn on your SPDIF-IN device and start to playback. Finally, press 'Record' to start the recording process.

