

flash-ME-xchange

***USB Memory Card Reader
for CF Type I / II, IBM Microdrive,
SM, MMC AND SD***

Installation Manual

www.zoltrix.com



Disclaimer

The Manufacturer makes no representations or warranties, expressed, statutory or implied, regarding the fitness or merchantability of this product for any particular purpose. Further, the Manufacturer is not liable for any damages, including but not limited to, lost profits, lost savings, or other incidental or consequential damages arising out of the use of this product. The Manufacturer also reserves the right to make any improvements or modifications to the product described in this manual at any time, without notice of these changes.

Copyright

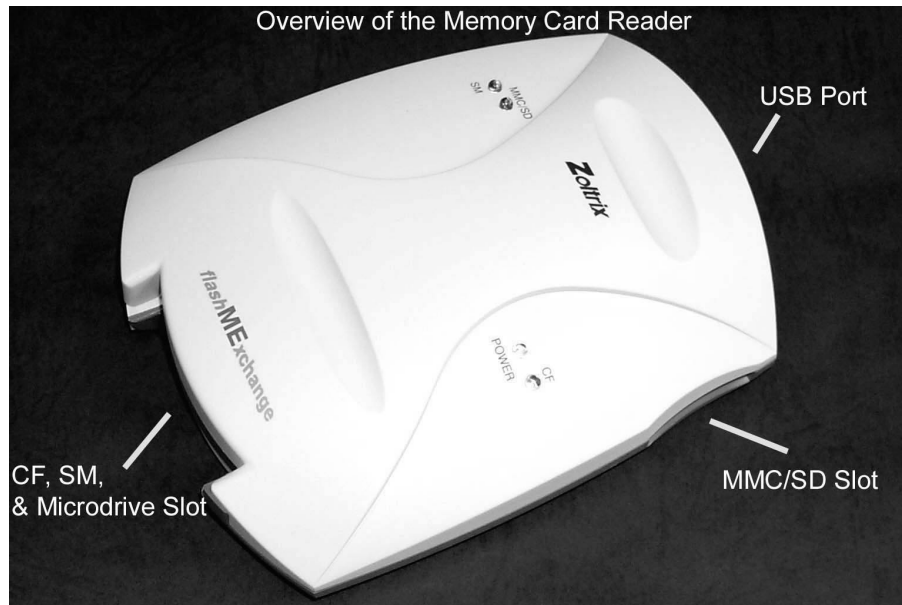
This manual may not be copied, photocopied, transmitted, or translated into language or computer language, in any form, or by any means, in whole or in part, without the prior written consent by the Manufacturer.

Microsoft and the Microsoft Windows® are registered trademarks or trademark of Microsoft Corporation in the United States and/ or other countries.

All rights reserved. Zoltrix, the Zoltrix logo, and the Zoltrix products referred to herein are either the trademarks or the registered trademarks of Zoltrix. All other trademarks are the property of their respective owners.

(c) Copyright 2001. All rights reserved.

Simple installation with **Zoltrix “*flash-ME-xchange*” USB Memory Card Reader**



Thank you for choosing Zoltrix “*flash-ME-xchange*” USB Memory Card Reader! It is an external memory card reader that bridges the gap between your computer and your valuable digital devices (digital cameras, handheld computers, PDAs, MP3 players...etc). Supporting 4 major memory cards (Compact Flash Type I & II, IBM Microdrive, Smart Media, MMC, and SD), it provides simultaneous file transfer from one card to another. The USB interface enables easy installations no matter you are using notebook or desktop computers. The computer will instantly recognize the cards as physical drives allowing quick and easy data transfer.

Drivers Installation

Make sure you are running Windows® 98 / 98SE, Windows® ME, or Windows® 2000.

- 1. Connect the flash-ME-xchange directly to the PC motherboard or self powered USB HUB by using bundled USB cable when the PC is on and Windows® is loaded.**

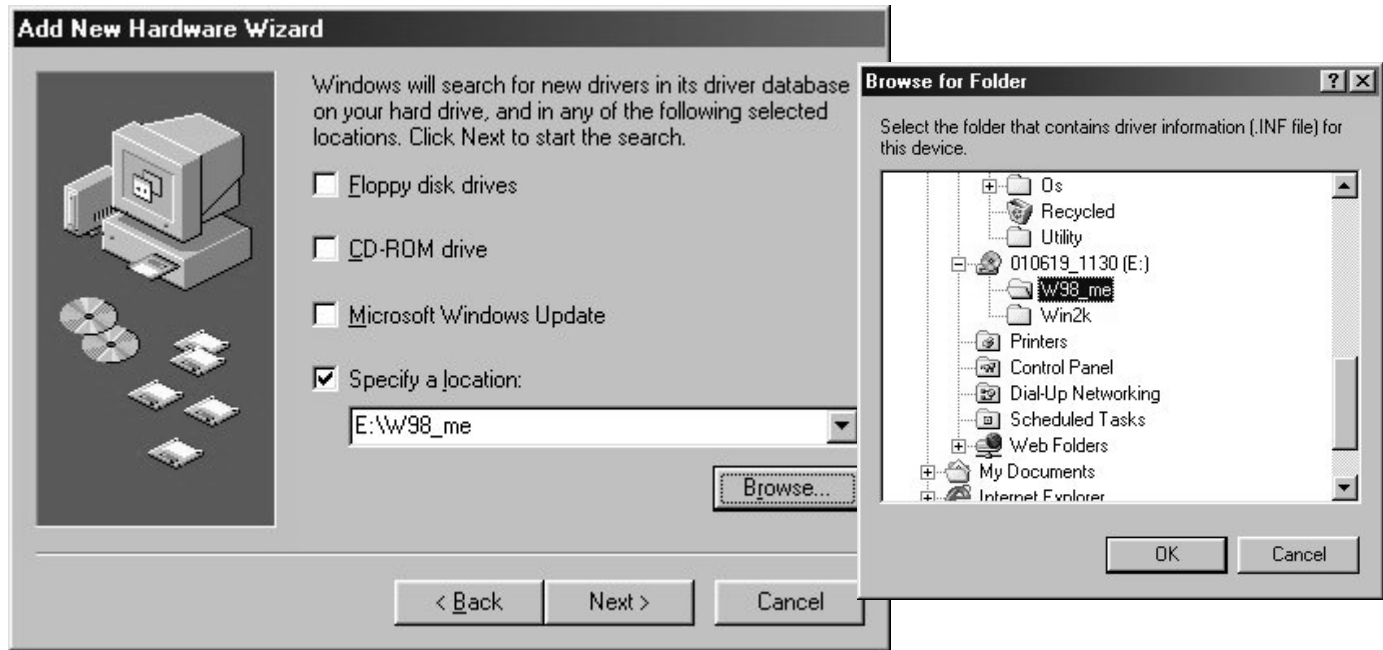
2. The following screen will appear and press “Next” to proceed.



3. Select “Search for the best driver for your device” and press “Next”.



4. When Windows® prompts for drivers' location, select “Specify a location”, and press “Browse” to locate the driver folder W98_me for Window® 98 / 98SE / ME or folder Win2k for Window® 2000. (Please ensures to have driver CD loaded in CD-ROM at this time.) Press “OK” and press “Next” to proceed.



5. Drivers should now be found and press “Next” to install.

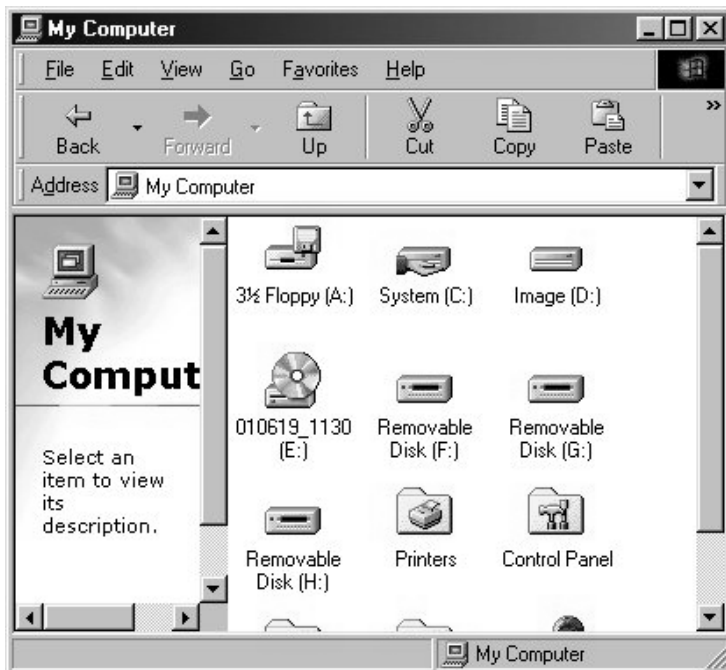


6. Press “Finish” to complete the driver installation process.



7. Drivers are now installed.

8. When browsing My Computer, your PC would be added 3 more “Removable Disk” (only the flash-ME-xchange is connected). CF Type I & II / IBM Microdrive drive, SM drive, and MMC / SD drive are placed in order from 1st to 3rd Removable Disk respectively.



NOTE: Please do not remove the memory cards (CF Type I & II, IBM Microdrive, SM, MMC and SD) when writing/reading is active (Green LED is flashing).