

Eagle Cam

***USB Camera Using Conexant's
Latest Imaging Technology***

Installation Manual

www.zoltrix.com



Disclaimer

The Manufacturer makes no representations or warranties, expressed, statutory or implied, regarding the fitness or merchantability of this product for any particular purpose. Further, the Manufacturer is not liable for any damages, including but not limited to, lost profits, lost savings, or other incidental or consequential damages arising out of the use of this product. The Manufacturer also reserves the right to make any improvements or modifications to the product described in this manual at any time, without notice of these changes.

Copyright

This manual may not be copied, photocopied, transmitted, or translated into language or computer language, in any form, or by any means, in whole or in part, without the prior written consent by the Manufacturer.

Microsoft and the Microsoft Internet Explorer logo are registered trademarks or trademark of Microsoft Corporation in the United States and/ or other countries. Internet CommSuite is a trademark of Smith Micro Software, Inc

All rights reserved. Zoltrix, the Zoltrix logo, and the Zoltrix products referred to herein are either the trademarks or the registered trademarks of Zoltrix. All other trademarks are the property of their respective owners.

(c) Copyright 1999 . All rights reserved.

Simple installation with Zoltrix “*Eagle Cam*” USB camera

Thank you for choosing Zoltrix “*Eagle Cam*” USB CMOS camera! It will provide you the most cost-effective way to communicate with your friends and relatives in the world using latest computer technology.

Camera Installation

The “*Eagle Cam*” provides you flexibility in mounting the camera either on top of your monitor or on your notebook computer. Please refer to the following diagrams.

a. Mounting on monitor:

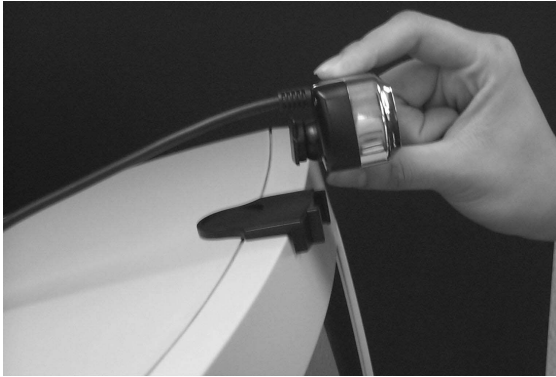
Remove the protective label from the camera base before mounting.



The center is the ideal position for mounting the camera base on the monitor.



Mount the camera to the camera base as shown.



To use the camera, simply slide the cover to the right. The center ring can be rotated to adjust picture's sharpness.



b. Mounting on notebook computer:

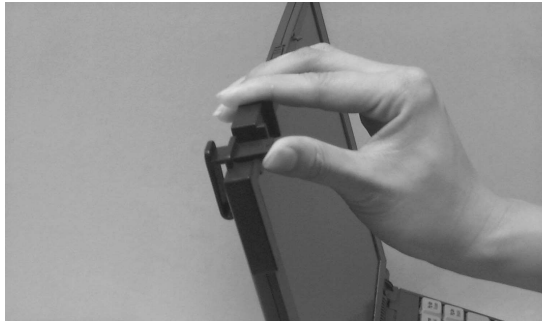
Mount the notebook camera base onto the corner of the notebook cover and lock the base by pressing the attached clip as shown.



Mount the camera to the notebook camera base as shown.



To remove the notebook camera base from the computer.



Drivers Installation

Make sure you are running Windows® 98 on your computer and the software CD-ROM is in the CD-ROM drive.

1. **Connect the camera cable to your computer.**
2. **The following screen will appear and press “Next” to proceed.** (Note: If you have enabled CD “Auto Insert Notification”, you should see the Eagle Cam Installation Screen appears. If so, you can select “Cancel” to the following drivers installation step and then click “Install Eagle Cam Drivers” to proceed.)



3. Select “Search for the best driver for your device” and press “Next”.



4. When Windows prompts for drivers' location, select CD-ROM drive or specify a location where your CD-ROM drive is located.



Drivers should now be found and press “Next” to install.

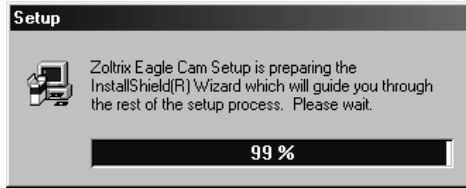


5. Press “Finish” to complete the driver installation process.



Setting up the Eagle Cam

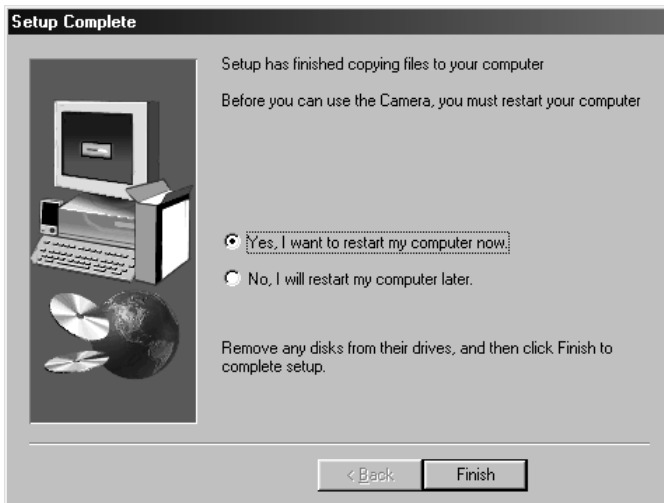
1. Run **D:\setup.exe** (Replace **D:** with the drive letter of your CD-ROM drive if necessary).



2. The following screen will appear and press “Next” to proceed.



Setup is now finished and restart the computer to complete.



Software Installation

The “*Eagle Cam*” has come with a unique and affluent software package that includes Internet Comm Suite™, Microsoft® Internet Explorer™ with NetMeeting™ and Video Editing Software. You can use them to make Video Conference Calls, Video Emails, Security Camera and more. Now please install them from the Eagle Cam Installation Screen or from the directories as follows:

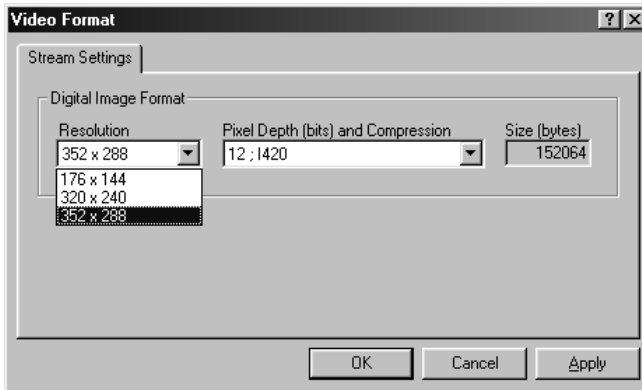
1. Internet Comm Suite™
D:\ICS\setup.exe
2. Microsoft® Internet Explorer 5.0 with NetMeeting™
D:\IE5\I386\setup.exe
3. Video Editing Software
D:\AVIEdit\setup.exe

Note: Instruction manuals are in PDF format and located in D:\Manuals. To view, please first install Acrobat Reader in D:\Acrobat\ar302.exe.

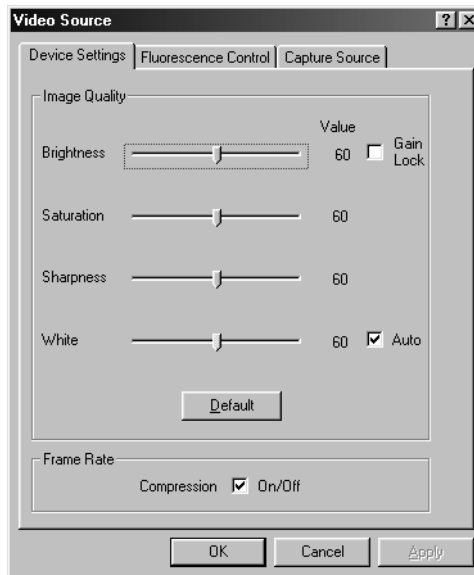
Now you are ready to enjoy the unique features of Zoltrix “*Eagle Cam*”!

Fine Tuning and Adjustment

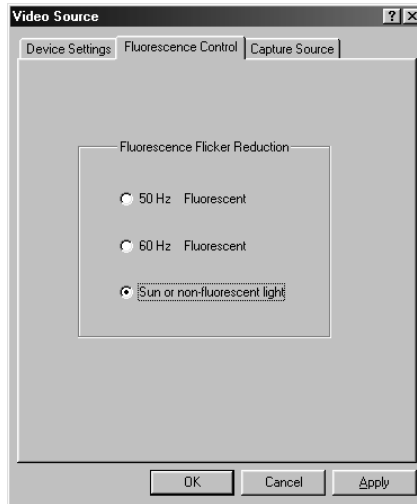
1. The following is the video format settings. By default, the resolution is 352x288.



2. The following settings allow you to adjust image quality. In the frame rate section, select compression on to achieve best motion video quality. Or select off for best still picture quality.

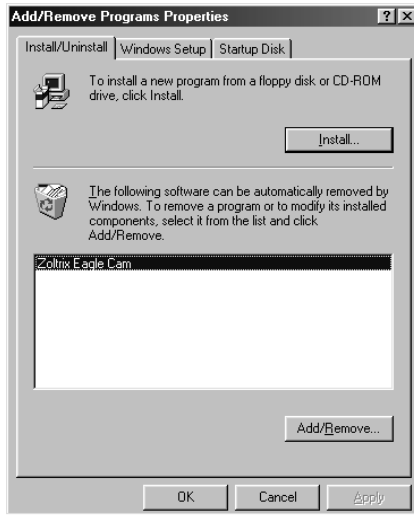


3. If you are using fluorescence light, please consult with your local power station for correct Hz setting. Otherwise, you can try selecting either 50Hz or 60Hz to avoid image flickering. Select “Sun or non-fluorescence” if you are using light bulb or in outdoor environment.



Uninstalling the “*Eagle Cam*”

Go to Windows Control Panel>Add/Remove Programs, select “Zoltrix Eagle Cam” and click Add/Remove button. Then click “Yes” to confirm removal.



Go to Windows Control Panel>System>Device Manager, select “USB Video Camera for Conexant” under Imaging Device. Then click “Remove” and “OK” to confirm removal.

